



# SupaMetallic

## Artwork Specs.

 **MADE IN  
BRITAIN**

[supacolour.co.uk](http://supacolour.co.uk)

# SupaMetallic

## Artwork Specs.

## Metallic Swatch Reference Sheet.

### Matching Colours.

Once the metallic process is applied, the colours will be distorted significantly from what appears on screen.

Use your physical swatches to reference these colours, to see how they come out in real life.

 M-1 PMS 877	 M-2 PMS 871	 M-3 CMYK 0/20/80/0	 M-4 CMYK 0/20/100/0	 M-5 CMYK 0/40/100/0	 M-6 CMYK 0/50/100/0	 M-7 CMYK 15/50/100/0
 M-8 CMYK 0/20/0/0	 M-9 CMYK 0/40/40/0	 M-10 CMYK 0/50/50/0	 M-11 CMYK 0/60/10/0	 M-12 CMYK 0/80/20/0	 M-13 CMYK 0/100/0/0	 M-14 CMYK 10/80/0/0
 M-15 CMYK 20/0/0/0	 M-16 CMYK 50/0/0/0	 M-17 CMYK 80/0/0/0	 M-18 CMYK 80/20/0/0	 M-19 CMYK 100/0/0/0	 M-20 CMYK 60/40/0/0	 M-21 CMYK 40/60/0/0
 M-22 CMYK 0/0/40/0	 M-23 CMYK 0/0/80/0	 M-24 CMYK 20/0/80/0	 M-25 CMYK 50/0/100/0	 M-26 CMYK 80/0/80/0	 M-27 CMYK 60/0/60/0	 M-28 CMYK 40/0/40/0

# SupaMetallic

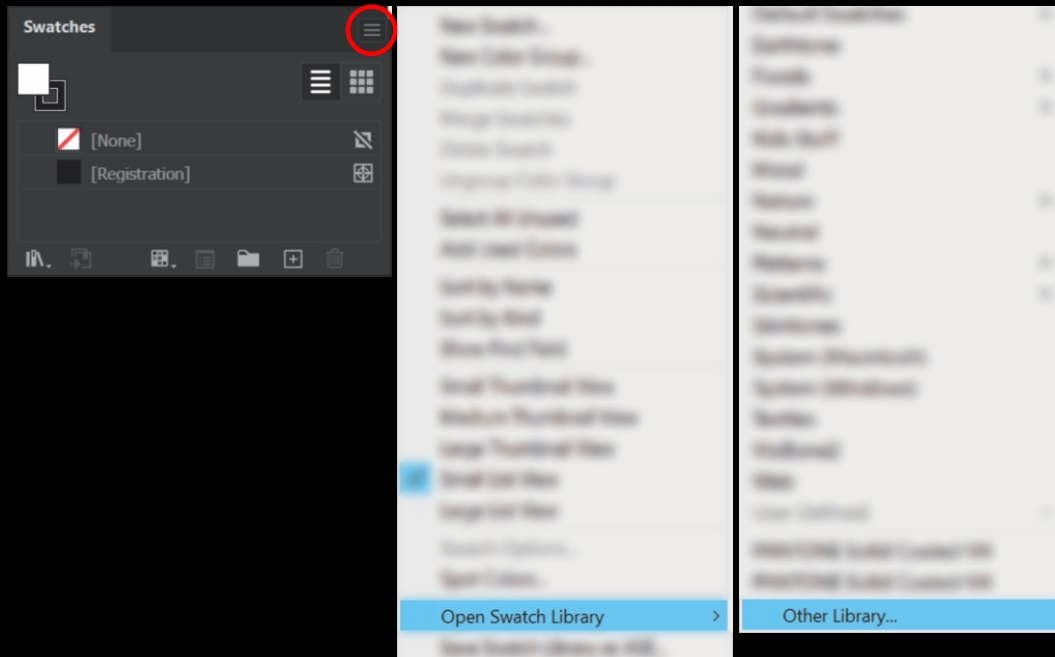
## Artwork Specs.

## Swatch Library Installation Guide.

Ai  
AI

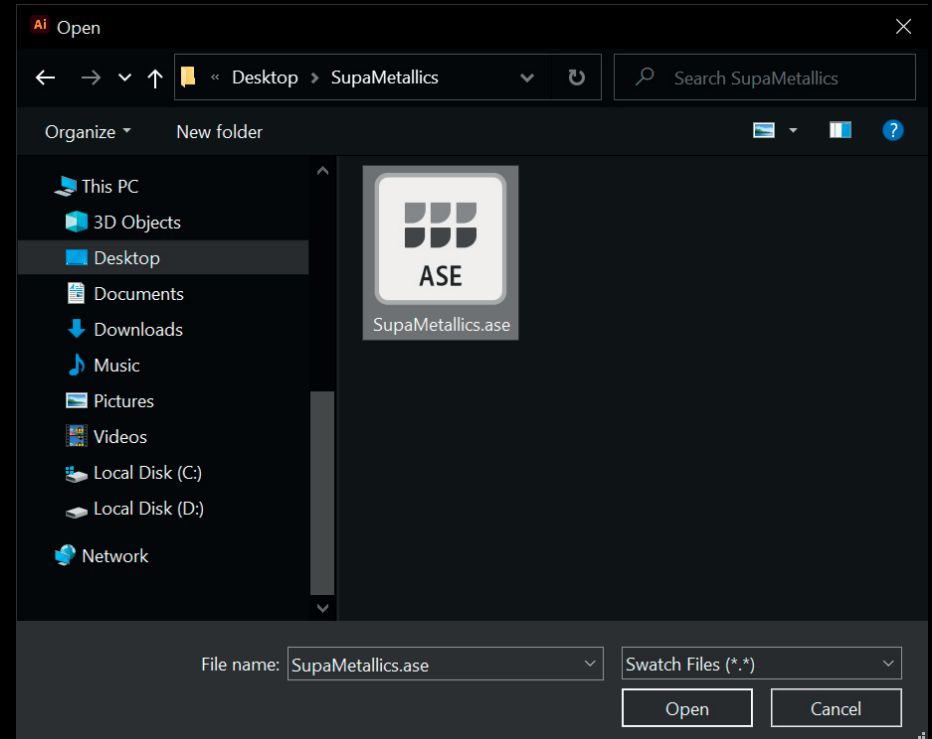
### Step #1.

In the Swatches panel, open the “burger” menu (top right) and navigate to **Open Swatch Library > Other Library...**



### Step #2.

Navigate to, and select the **SupaMetallics.ase** file.



# SupaMetallic

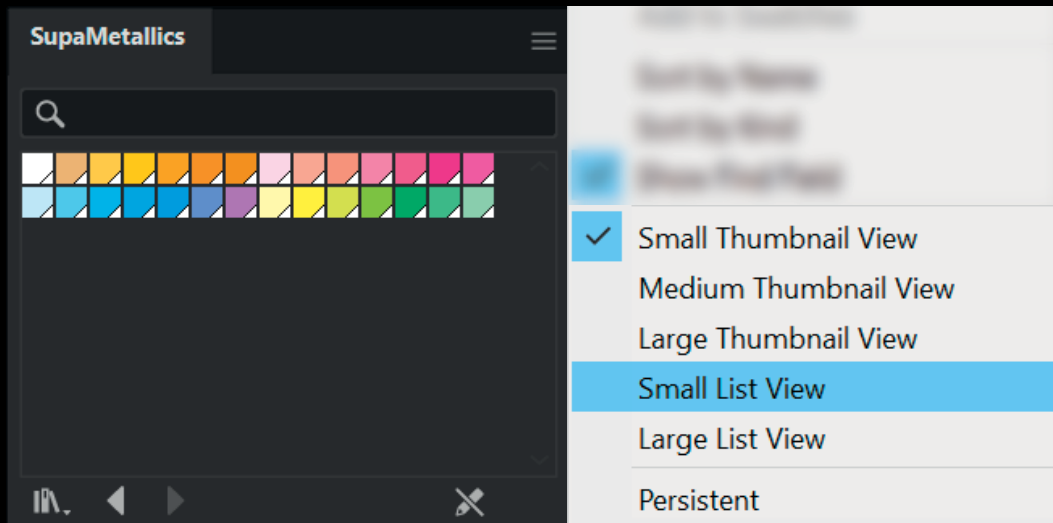
## Artwork Specs.

## Swatch Library Installation Guide.

Ai  
AI

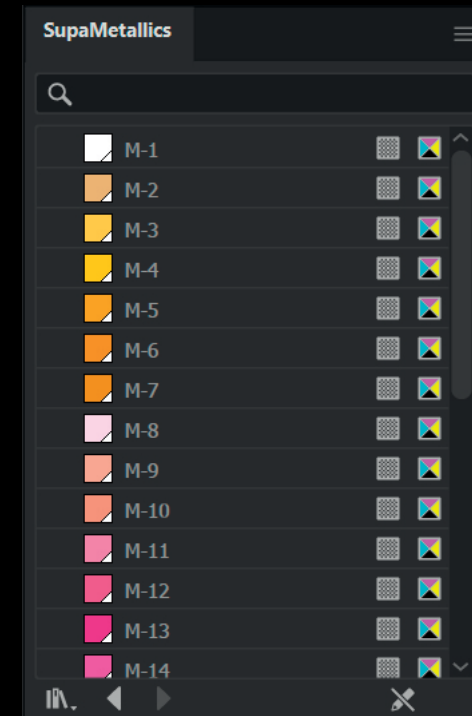
### Step #3.

To view the M-codes alongside the colours, open the burger menu on the new swatch library and select either “**Small List View**” or “**Large List View**”. Additionally, to keep the swatch library open, you can select “Persistent”. We’d also recommend saving your workspace after doing this.



### DONE! - Supaeasy.

If you every close the swatch library and want to open it back up, navigate to **Window > Swatch Libraries > Supametallics** to bring it back.



# SupaMetallic

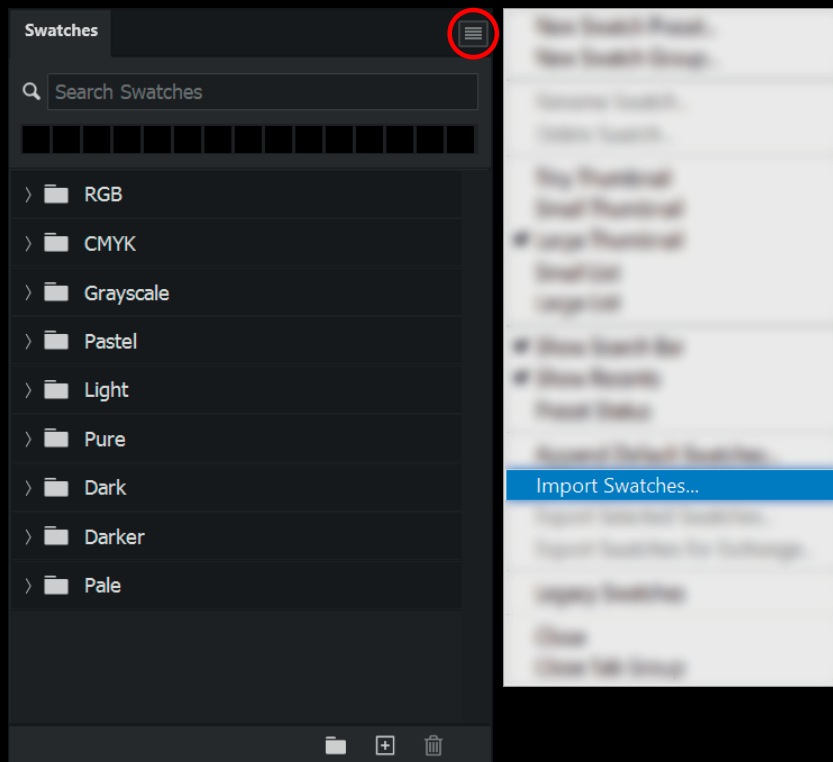
## Artwork Specs.

## Swatch Library Installation Guide.

Ps  
PSD

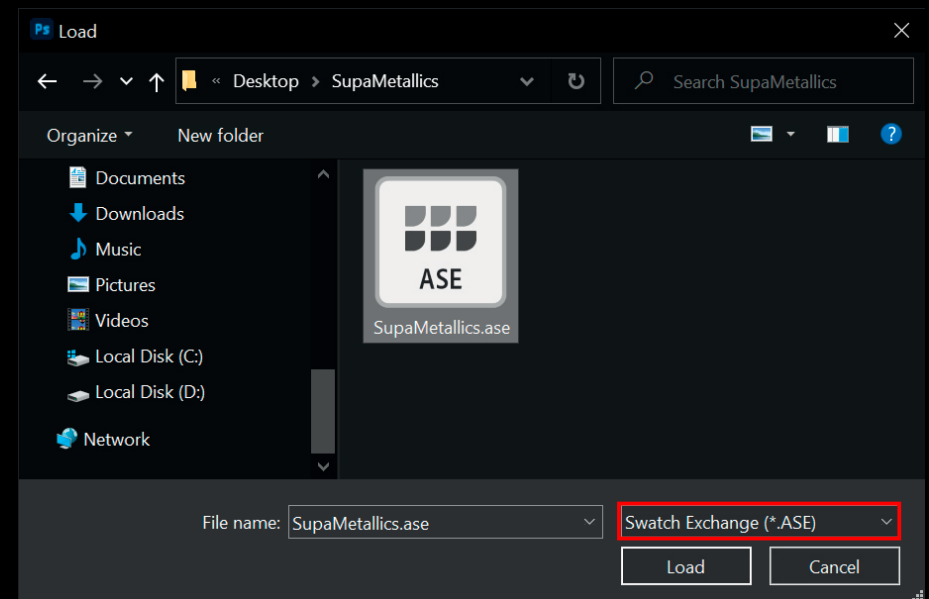
### Step #1.

In the Swatches panel, open the “burger” menu (top right) and navigate to Import Swatches...



### Step #2.

Navigate to, and select the **SupaMetallics.ase** file.



Make sure your file type is set to **.ASE**  
Otherwise the file will not appear.

# SupaMetallic

## Artwork Specs.

## Swatch Library Installation Guide.



### Step #3.

To view the M-codes alongside the colours, open the burger menu once again and select either “**Small List**” or “**Large List**”.

### DONE! - Supaeasy.

